

LAP

DIARIO DE AGOSTO²⁰¹⁴



PROYECTOS :

Entrerrios
Centro cívico
Guggenheim Helsinki
Jardines infantiles

TEXTO:

Dibuja una línea aquí Edgar

Draw a line here Edgar





TEXTO:

Vivero de la Asomadera
Asomadera's nursery



TEXTO:

Terrazas vegetales, Concurso centro civico (vivero de la asomadera)
vegetable terraces, Civic center contest (asomadera's nursery)

“Cultivar un huerto es al mismo tiempo un acto de rebeldía y de esperanza. Una manera de decir: no me voy a rendir”

Vandana Shiva

TEXTO:

Cultivar un huerto

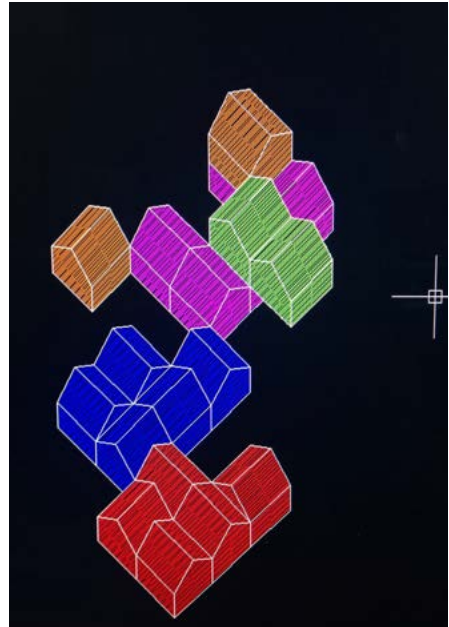
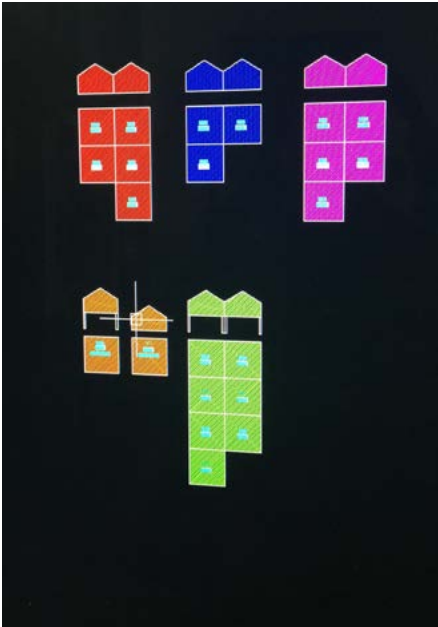
Garden



TEXTO:

Revelaciones, Entrerrios

Revelations, Entrerrios



TEXTO:

Apariciones, Jardines infantiles

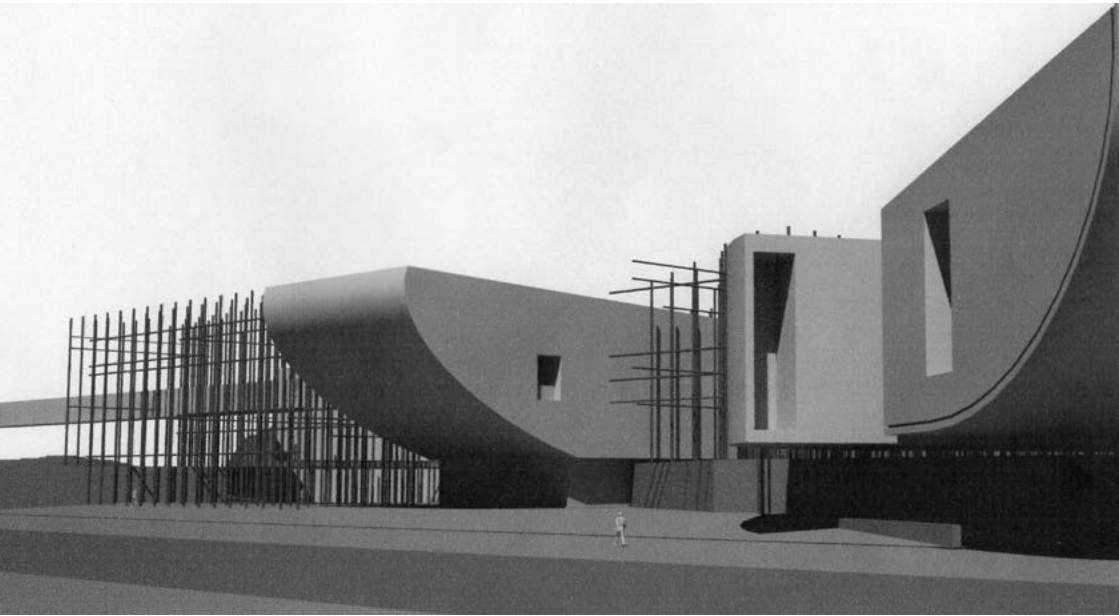
Aparitions, Kindergartdens



TEXTO:

Experimentación volumétrica, Jardines infantiles
Volumetric experimentation, Kindergartdens

16-08-2014



TEXTO:

Apariciones, Guggenheim Helsinki

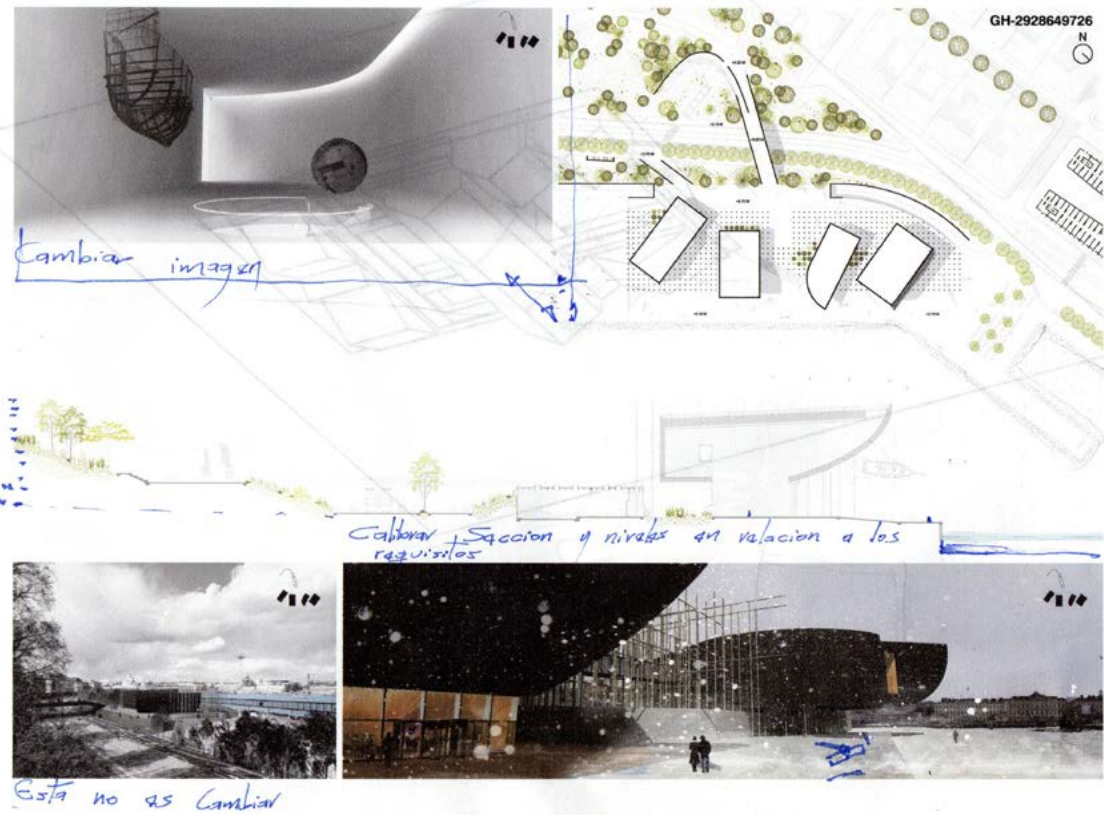
Aparitions, Guggenheim Helsinki

17-08-2014

TEXTO:

Charla en la Universidad Santo Tomas
conversation at the Santo Tomas university





TEXTO:

Revisiones, Guggenheim Helsinki
review, Guggenheim Helsinki

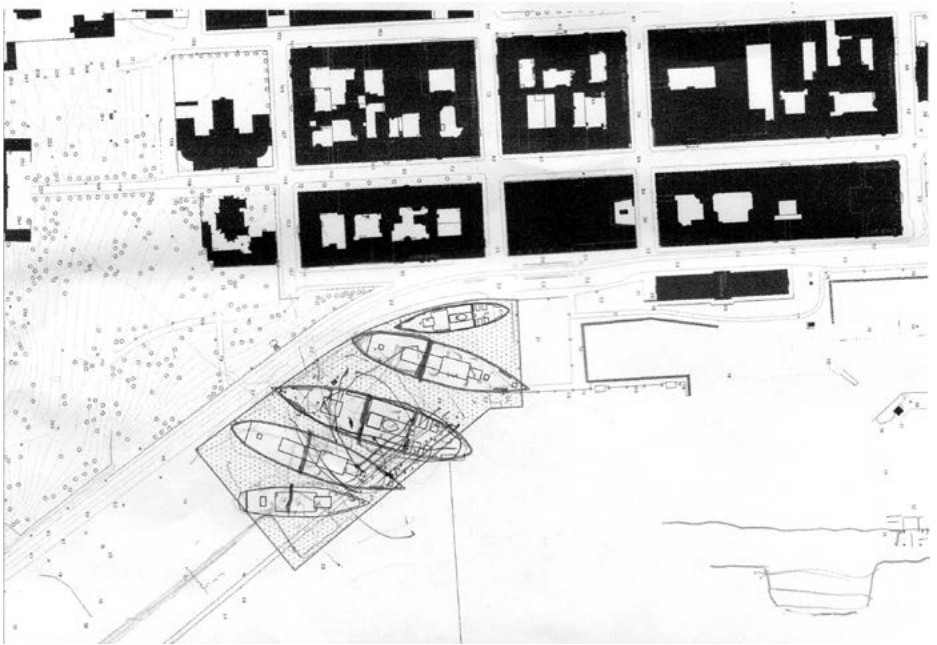
TEXTO:

Apariciones, Dalí desnudo y el horizonte platónico
Aparitions, naked Dalí and the platonic horizon



TEXTO:

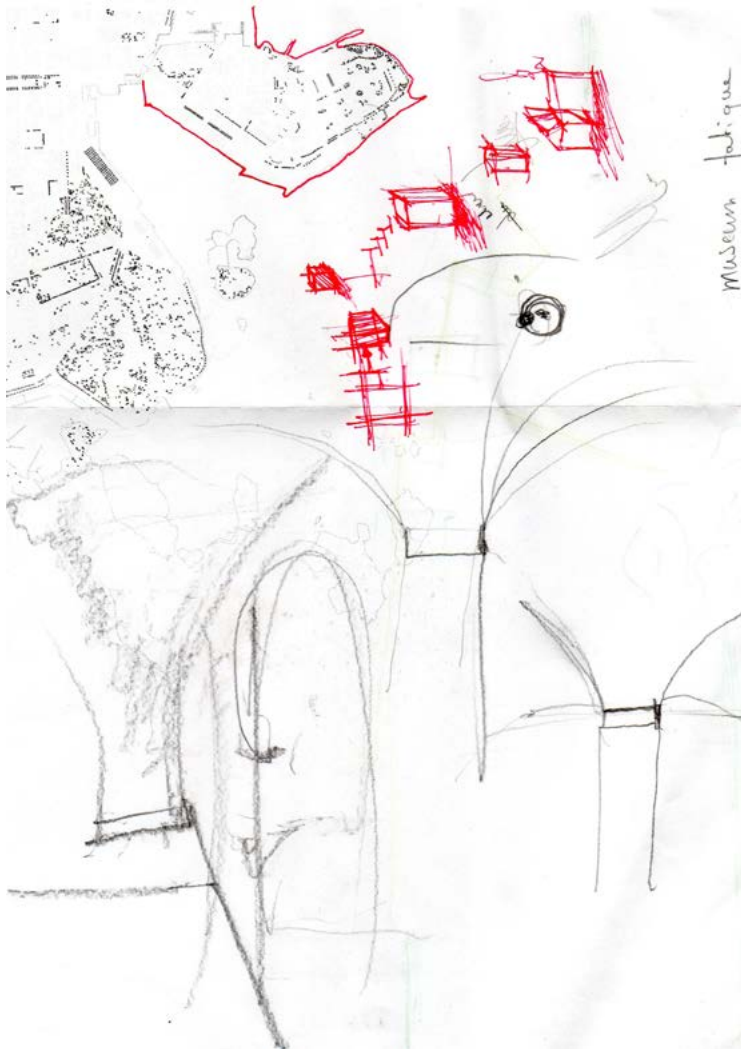
El puerto fantasma, Guggenheim Helsinki
Ghost Harbour, Guggenheim Helsinki





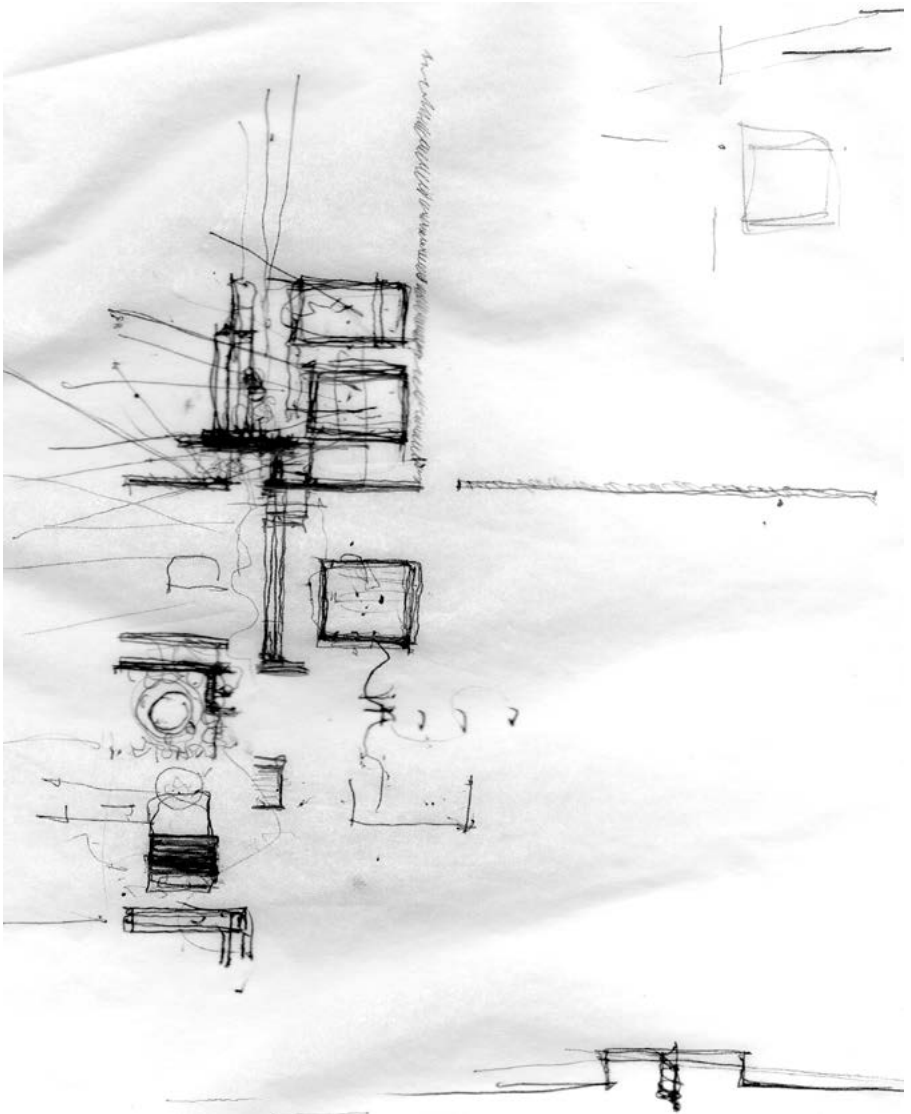
TEXTO:

Apariciones, esculpiendo en la oscuridad, Guggenheim Helsinki
Aparitions, sculpting in darkness, Guggenheim Helsinki



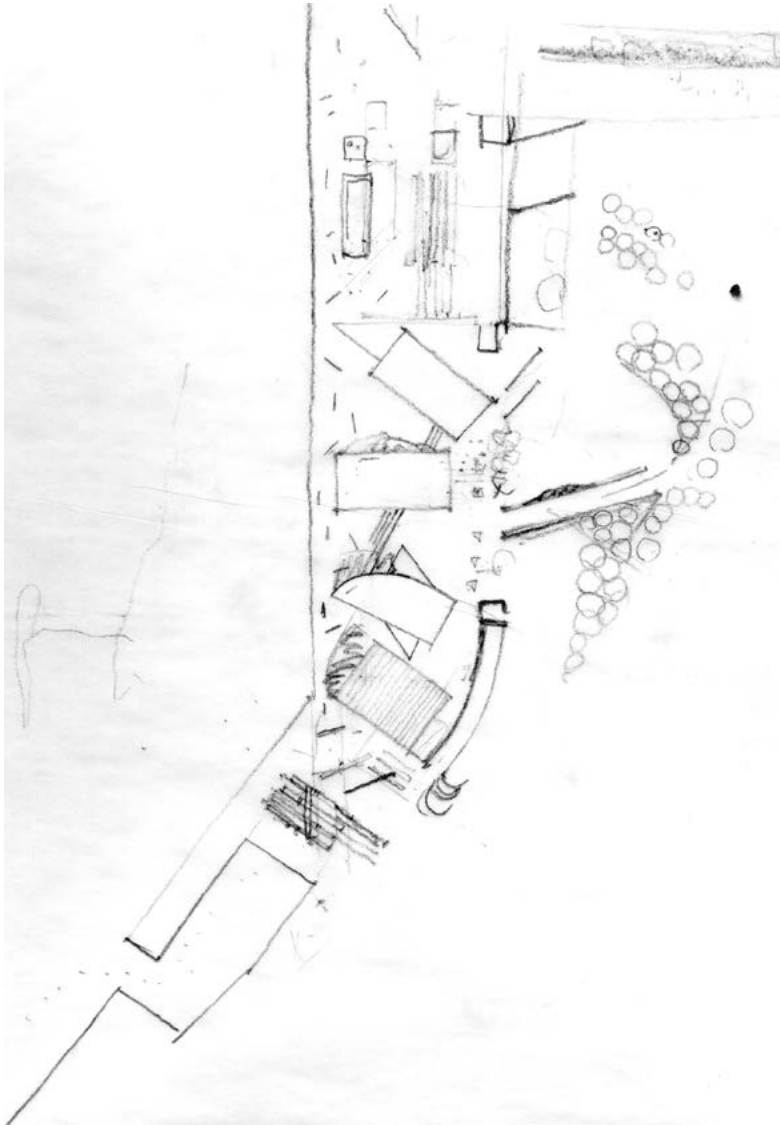
TEXTO:

Apariciones, Guggenheim Helsinki
Aparitions, Guggenheim Helsinki



TEXTO:

Apariciones, Guggenheim Helsinki
Aparitions, Guggenheim Helsinki

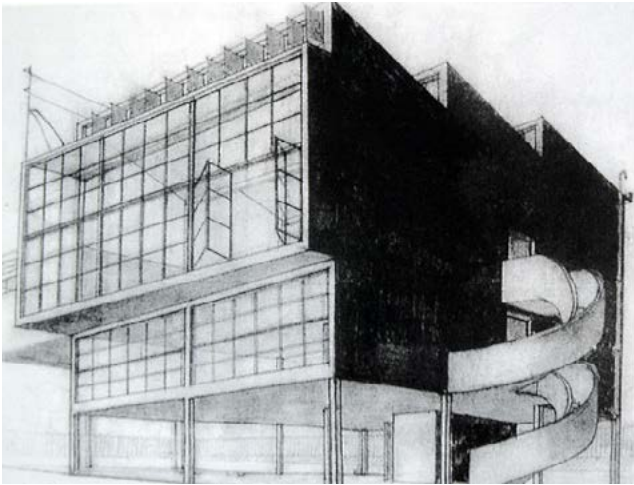


TEXTO:

Composicion del borde, Guggenheim Helsinki
Composition of the edge, Guggenheim Helsinki

TEXTO:

Toyo Ito conoce la casa Kahlo-Rivera de Juan O'Gorman
Toyo Ito Meets Kahlo-Rivera's house by Juan O'Gorman





TEXTO:

Visita al centro de la ciudad
visit to downtown

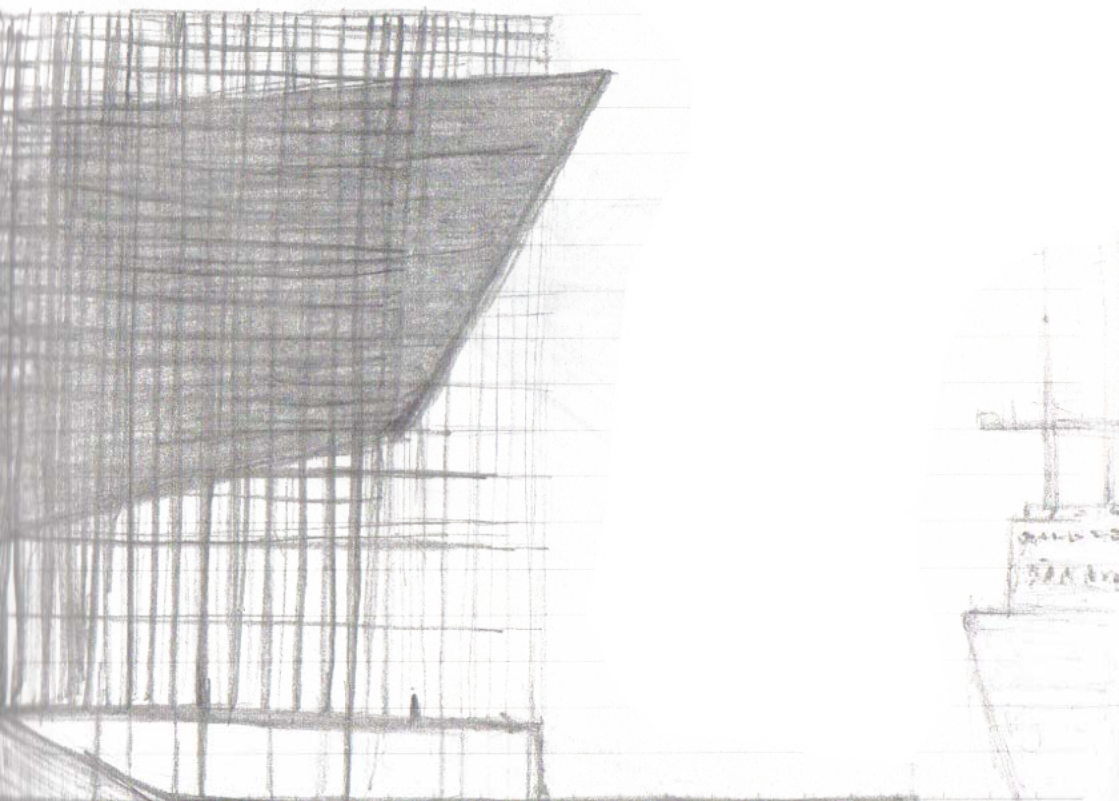


TEXTO:

La angustia del limite, Diluyendo el borde, Guggenheim Helsinki
The anguish of the limit, melting the edge, Guggenheim Helsinki

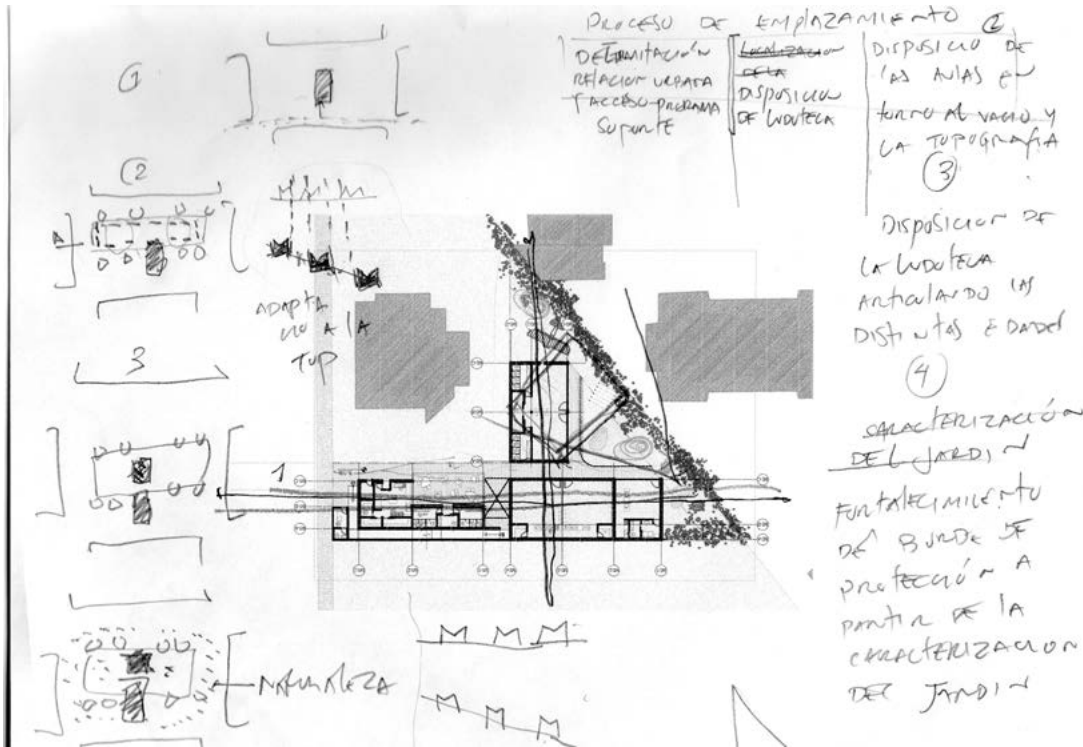
TEXTO:

Retorno interrumpido, Guggenheim Helsinki
interrupted return Guggenheim Helsinki



TEXTO:

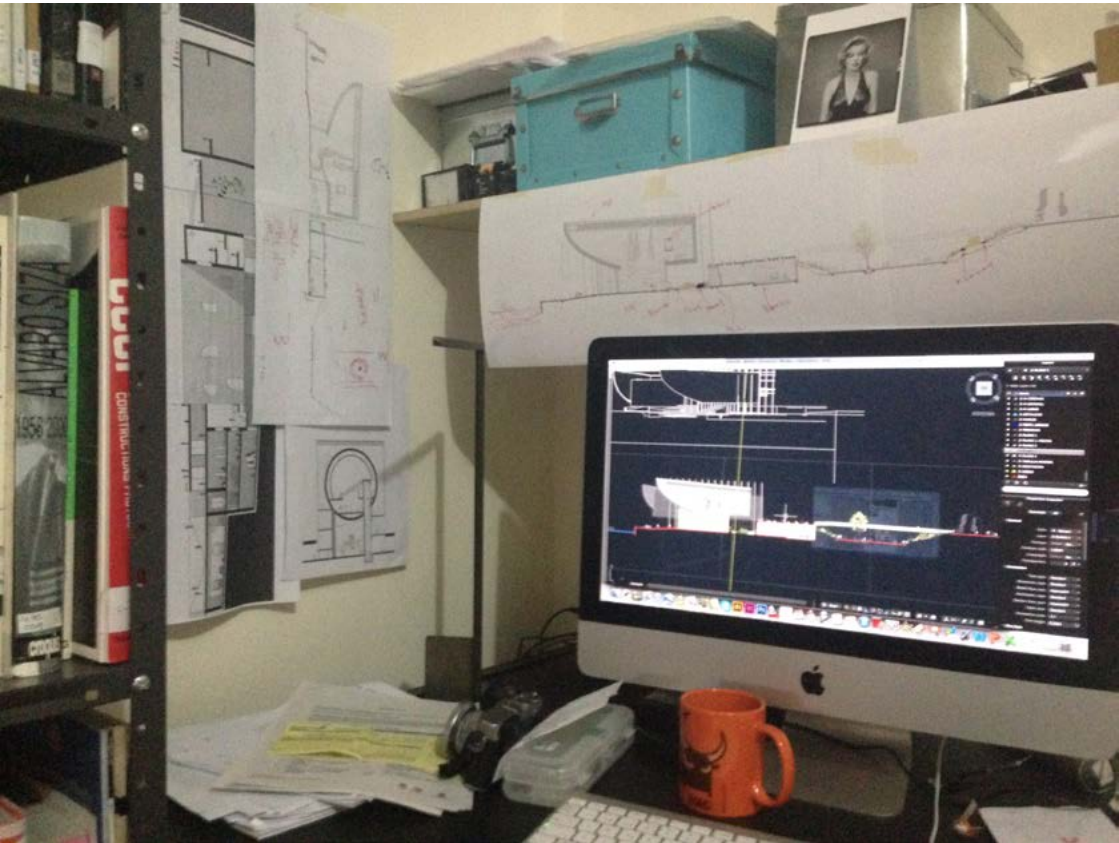
Distribución espacial, Jardines infantiles
Spatial distribution, Kindergartens



29-08-2014

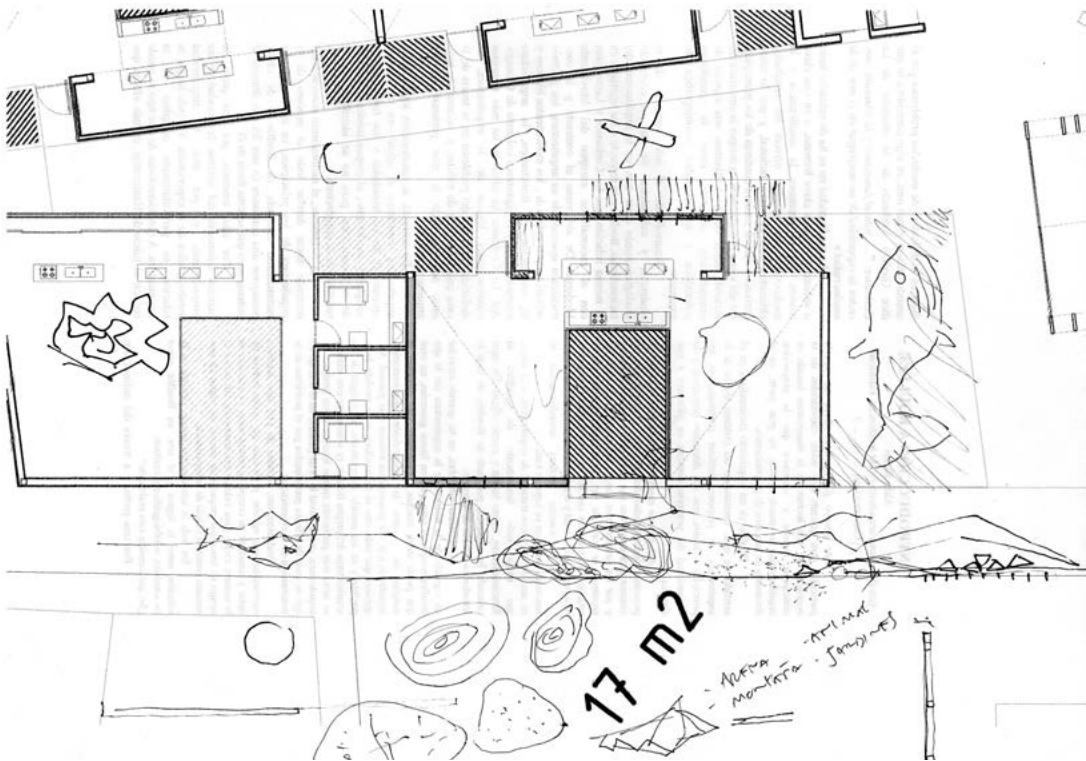
TEXTO:

Espacio de trabajo
Workspace



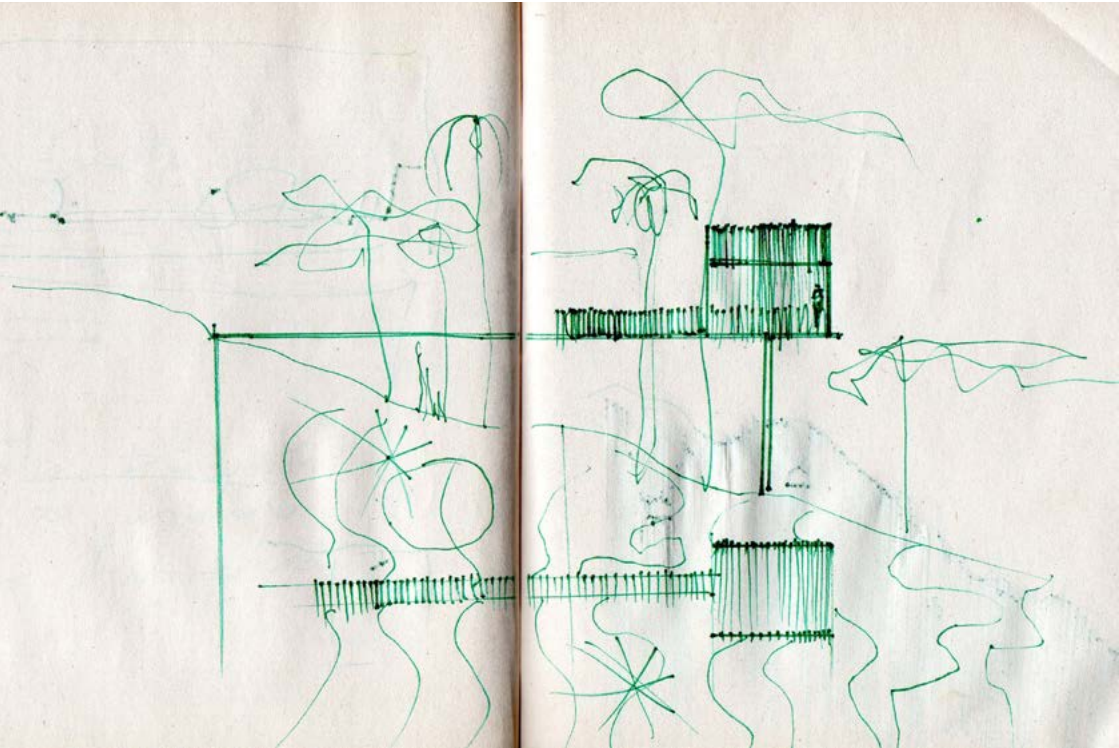
TEXTO:

Diseño de los patios, Jardines infantiles
Yard design, Kindergartens



TEXTO:

Mirador, Concurso centro civico
Gazebo, civic center contest



K-1-111
KI-95
93

ВЪДЪ ИРДИНТАРА



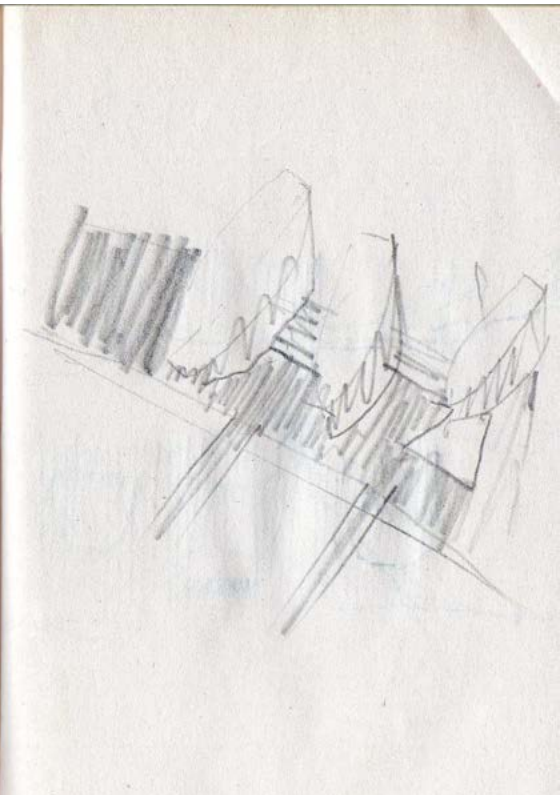
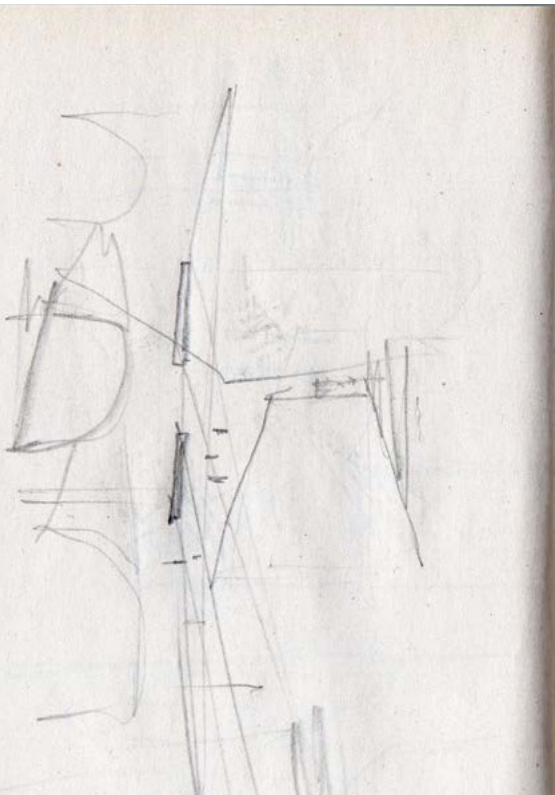
- | | | | | |
|--|--------------------------------|---------------------|--------------------------|---|
| 1 Островъ Лотчи | 6 Видный мостъ, вѣдъ въ городъ | 11 Фортъ Рязанскъ | 16 Фортъ Михаилъ | 21 Покъ Крестъ |
| 2 Арсеналъ | 7 Веревъ Св. Марта | 12 Фортъ Александръ | 17 Школа мурзеполковникъ | 22 Покъ Вѣкъ въ 5 ^й мѣстѣ отъ Ирбита |
| 3 Галера для купеческихъ кораблей | 8 Веревъ Св. Николая | 13 Фортъ Петра 1 | 18 Тюкъ | 23 Св. Духъ въ 4 ^й |
| 4 Судовыя галеры для купеческихъ кораблей | 9 Фортъ Михайловъ | 14 Фортъ Константъ | 19 Слѣбный амбаръ | 24 Парашенный мурзеполковникъ |
| 5 Наружная галера для купеческихъ кораблей | 10 Фортъ Кронштадтъ | 15 Фортъ Екатерины | 20 Кронштадтская галера | 25 Англ.-Французская галера |

Масштабъ 1:1000
1877

K-1-111
KI-95
93

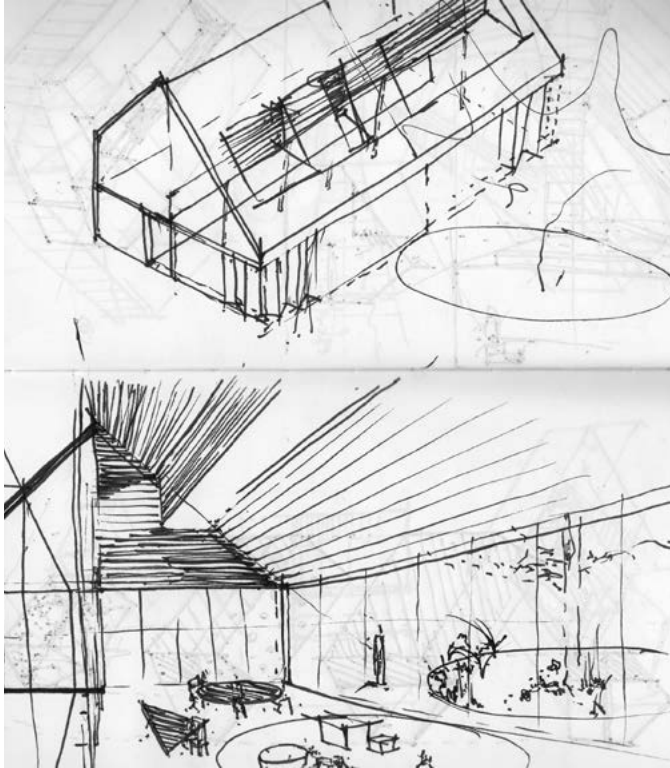
TEXTO:

Mapa de navegacion antiguo, Concurso Guggenheim Helsinki
Antique navigation map, Guggenheim Helsinki



TEXTO:

Boceto, Guggenheim helsinki
sketch, Guggenheim Helsinki



TEXTO:

Exploraciones espaciales, Jardines infantiles
spatial explorations, Kindergardents



TEXTO:

Terrazas vegetales, Concurso centro civico (vivero de la asomadera)
vegetable terraces, Civic center contest (asomadera's nursery)