

LAP

DIARIO DE SEPTIEMBRE 2015



PROYECTOS :

Viaje Nuevo México
Jardín de oficina
Sala siglo XX Museo de Antioquia
Casa Nuevo México
Parques de arena
Parque educativo La concordia
Bodega
Parques de arena
Proceso Logo Connatural



Detalle WYLY-REX+OMA-Albuquerque



Cutivo manzanas y duraznos *Apples and peaches orchard*



Cutivo manzanas y duraznos *Apples and peaches orchard*



Sendero en Santa Fe *Path in Santa Fe*

09-2015



Escalera-Pasamanos
Stairs- Handrail





Filarmonica de Dallas vista desde el acceso a la opera. IM Pei-Renzo Piano

Dallas philharmonic access- IM Pei-Renzo Piano

09-2015

Casa Santa Elena

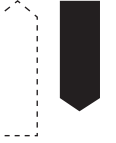






Jardín de oficina
Office garden





Jardín de oficina
Office garden



09-2015



Jardín de oficina

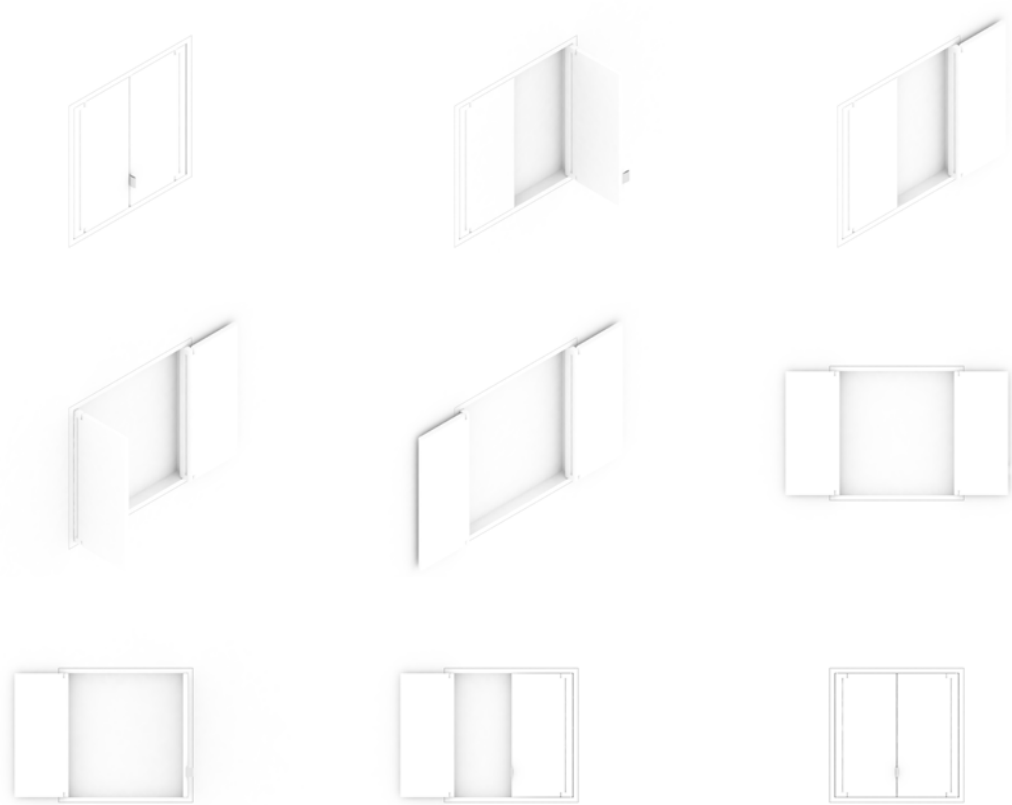


Jardín de oficina



Office garden



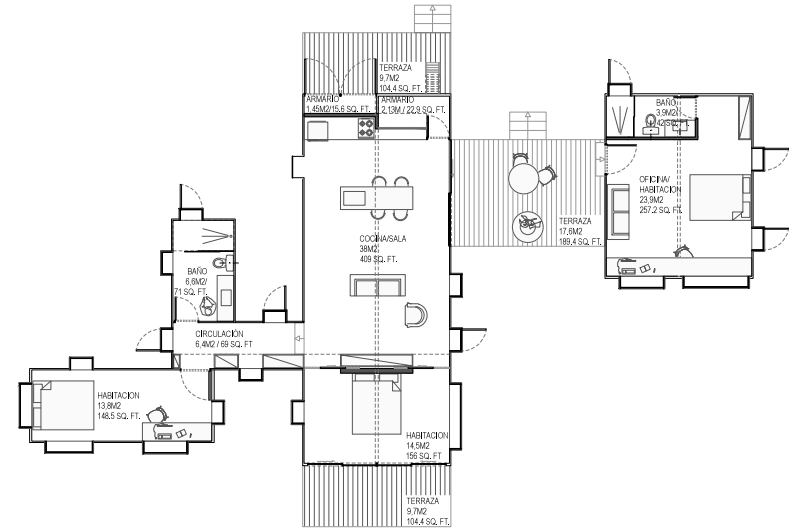
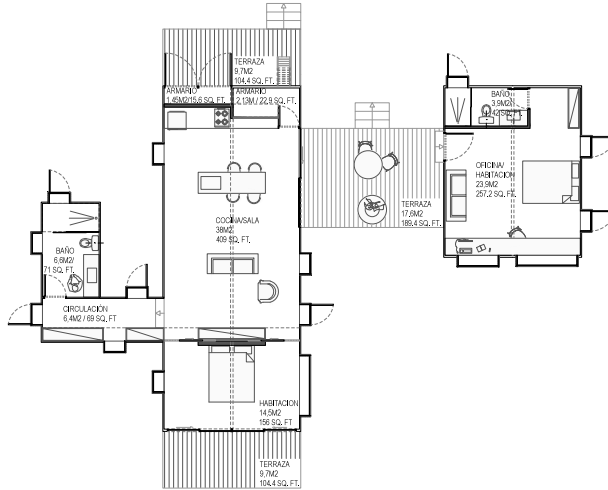
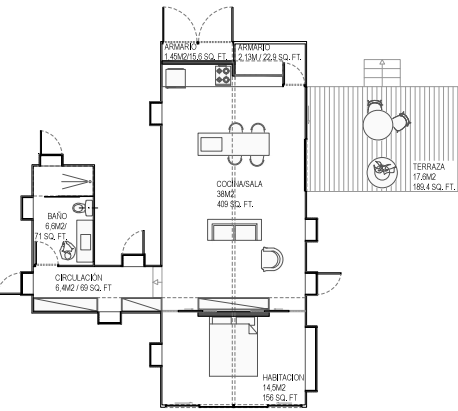


Sala siglo XX Museo de Antioquia
Museo de Antioquia XX Century room

09-2015



Casa Nuevo México
New Mexico's House



INTERIOR = 69M2 / 742.7 SQ. FT.
TERRAZAS = 17,6M2 / 189.4 SQ. FT.

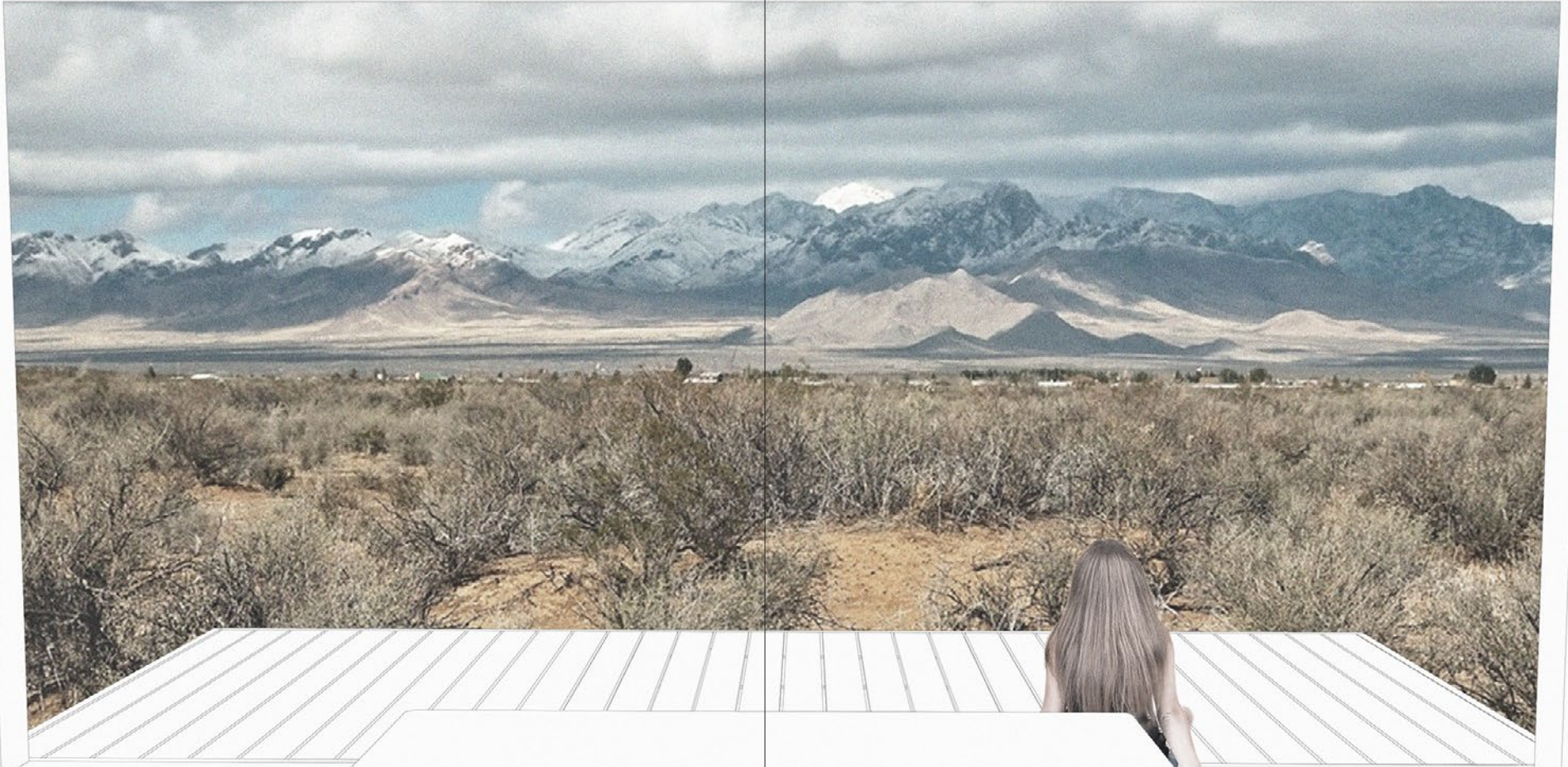
INTERIOR = 96,88M2 / 1042.8 SQ. FT.
TERRAZAS = 37M2 / 398.2 SQ. FT.

INTERIOR = 110,68M2 / 1191.3 SQ. FT.
TERRAZAS = 37M2 / 398.2 SQ. FT.

TOTAL = 86,5M2 / 930.8 SQ. FT.

TOTAL = 133,88M2 / 1441 SQ. FT.

TOTAL = 147,68M2 / 1589.6 SQ. FT.

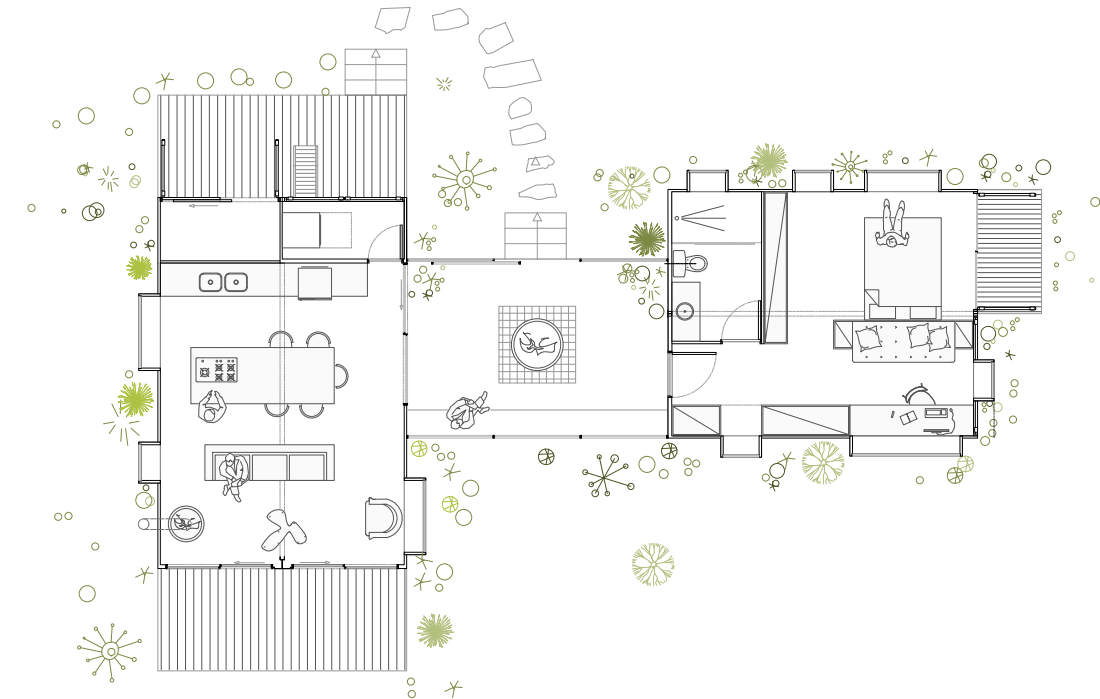
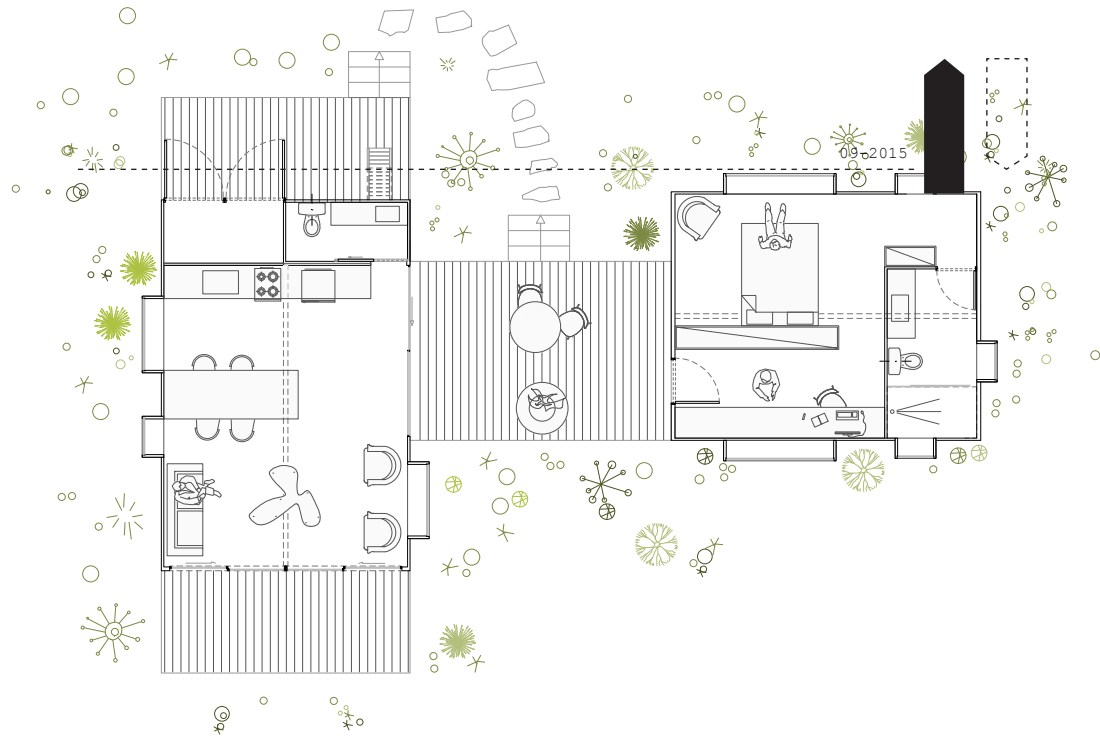


Casa Nuevo México
New Mexico's House

09-2015



Casa Nuevo México
New Mexico's House



Casa Nuevo México
New Mexico's House



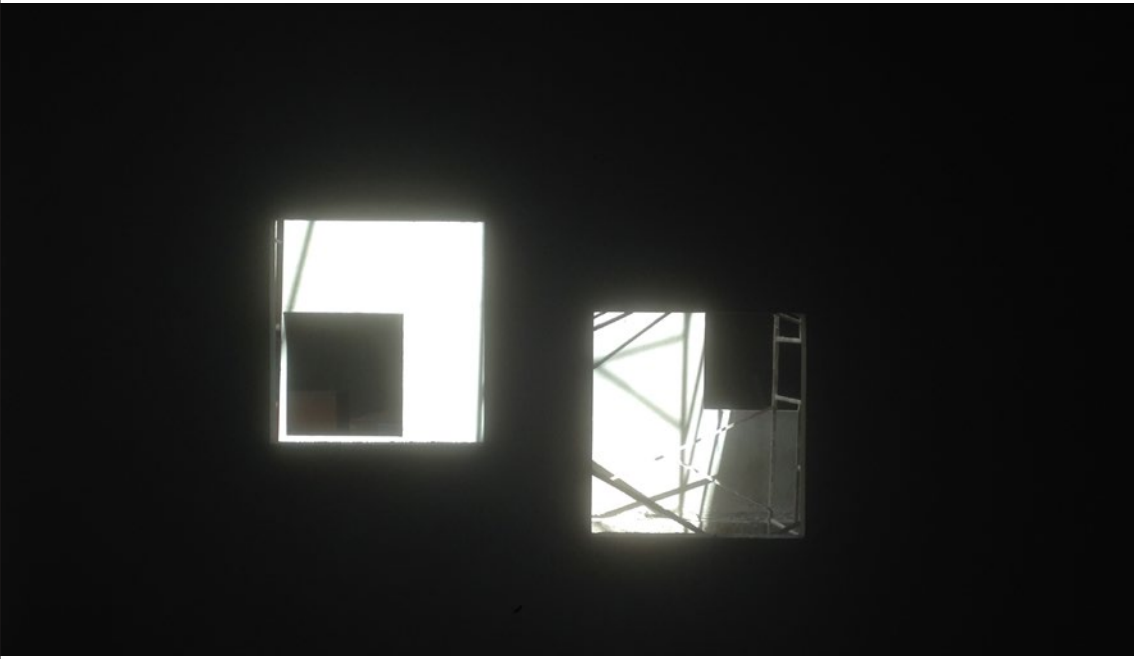
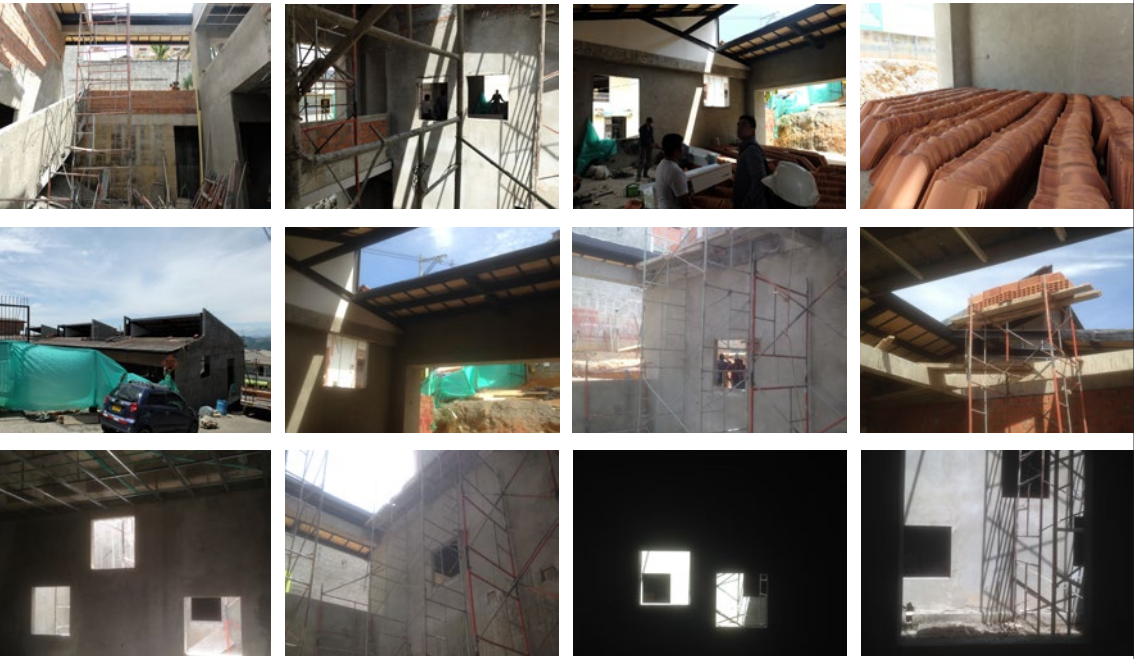
Casa Nuevo México
New Mexico's House

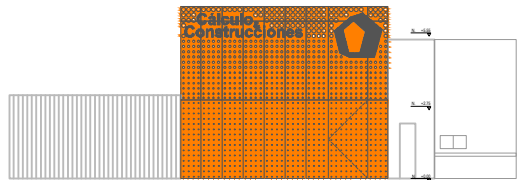
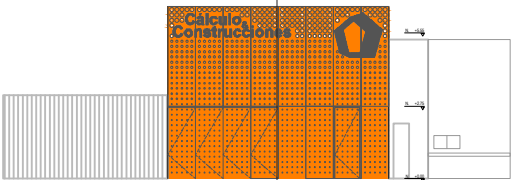
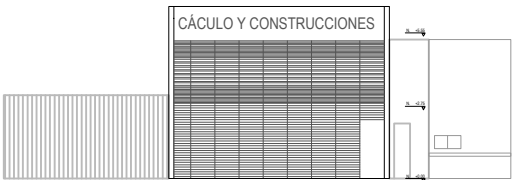
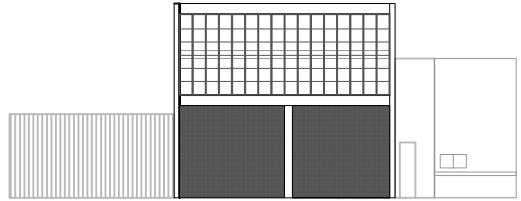
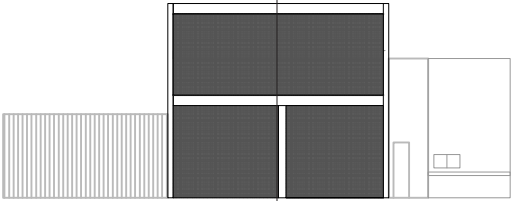
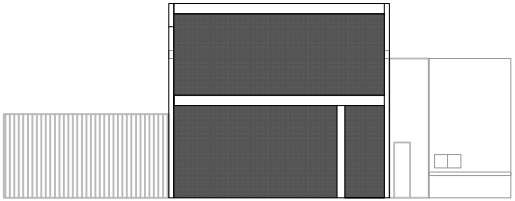
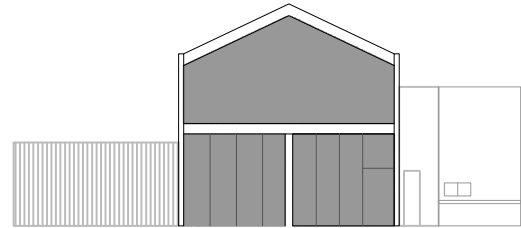
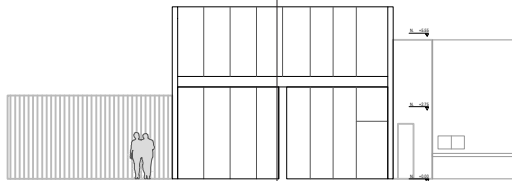
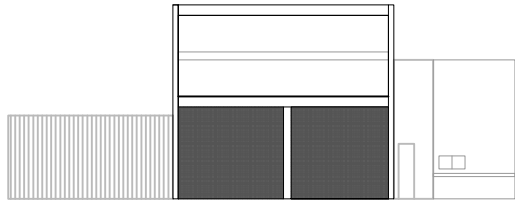
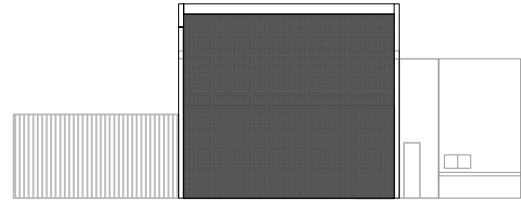
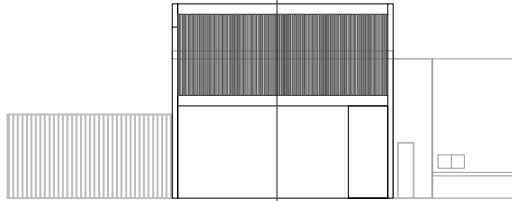
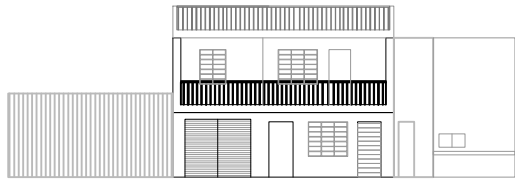
09-2015



Casa Nuevo México
New Mexico's House







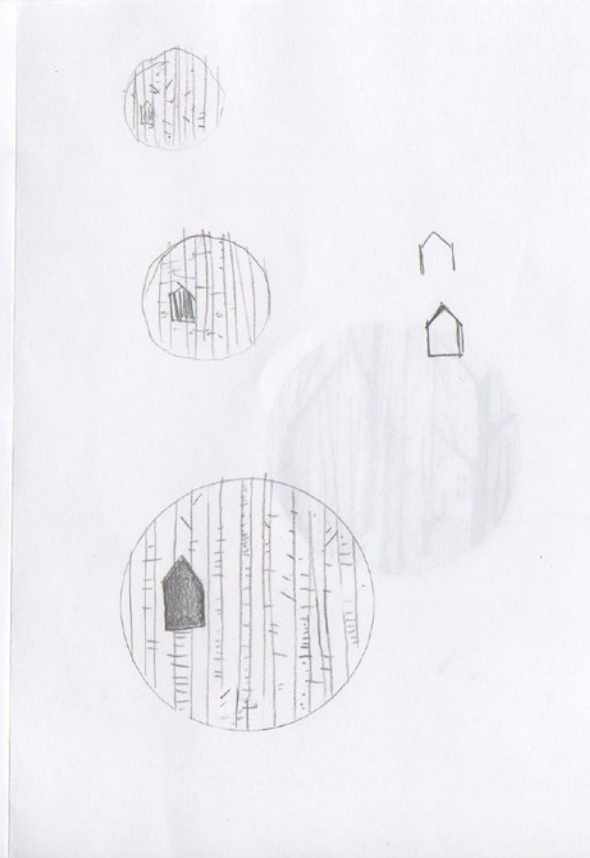
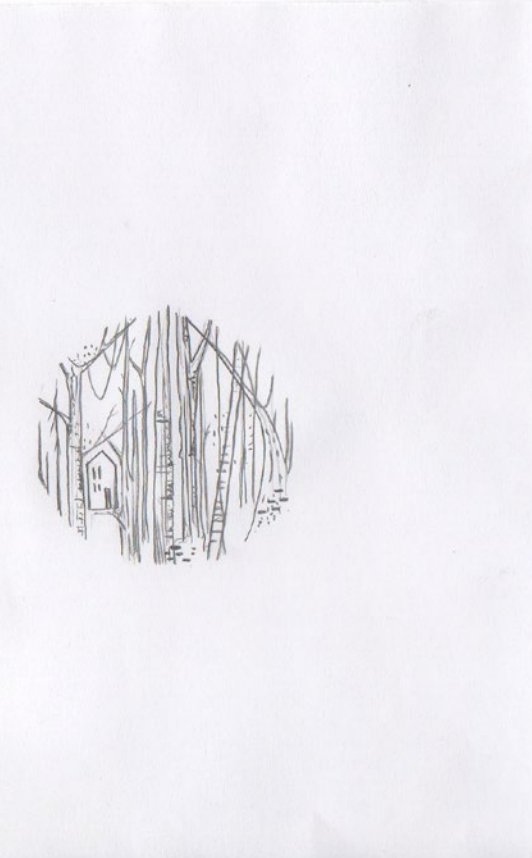
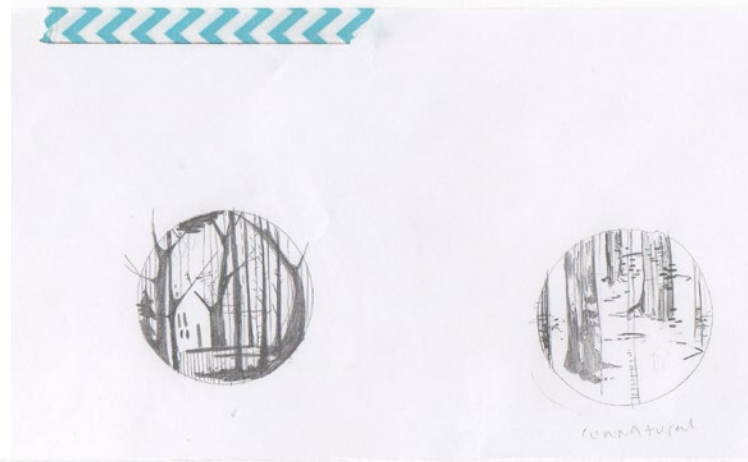
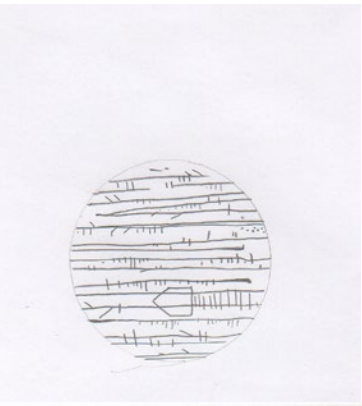


Parques de arena El Tirol

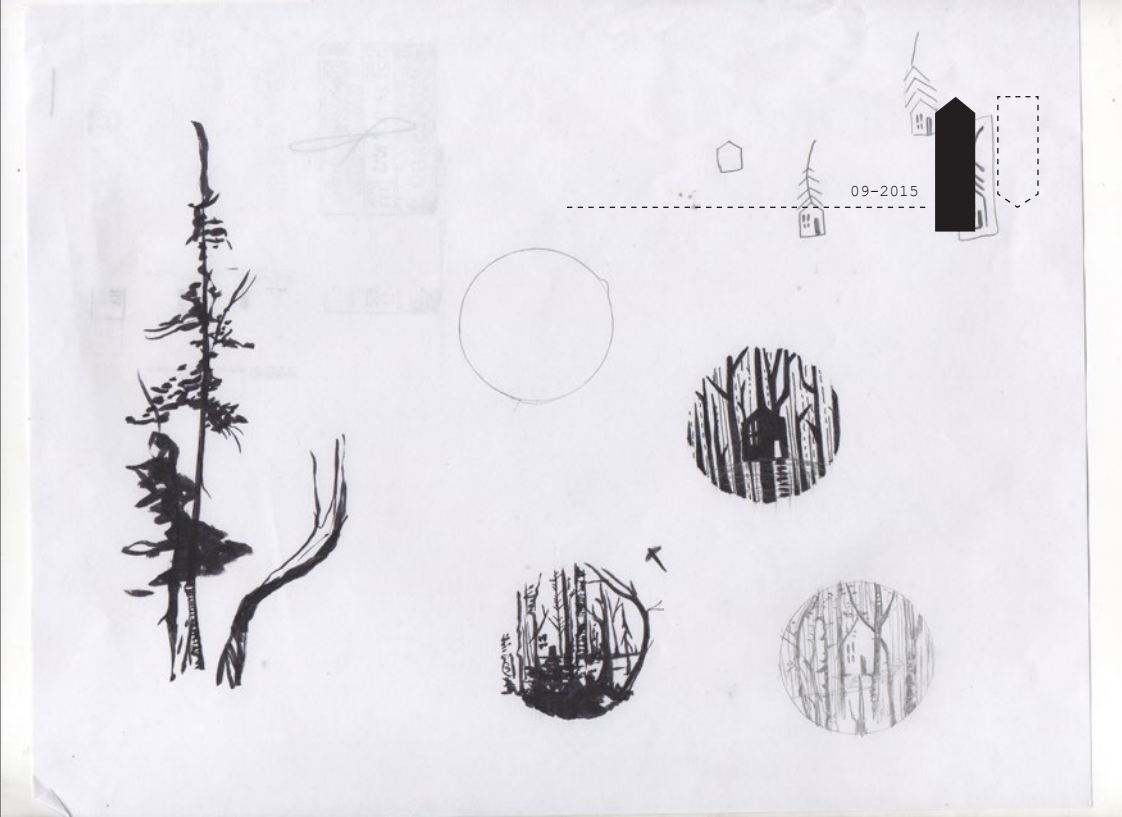


Sand park in El Tirol

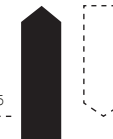




Proceso logo Connatural



Connatural's logo process



5



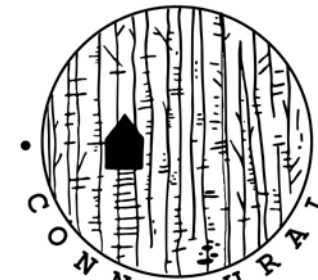
L-a-p

4



L-a-p

8



L-a-p

9



L-a-p

7



3



CONNATURAL SAS

L-a-p

6



2



CONNATURAL

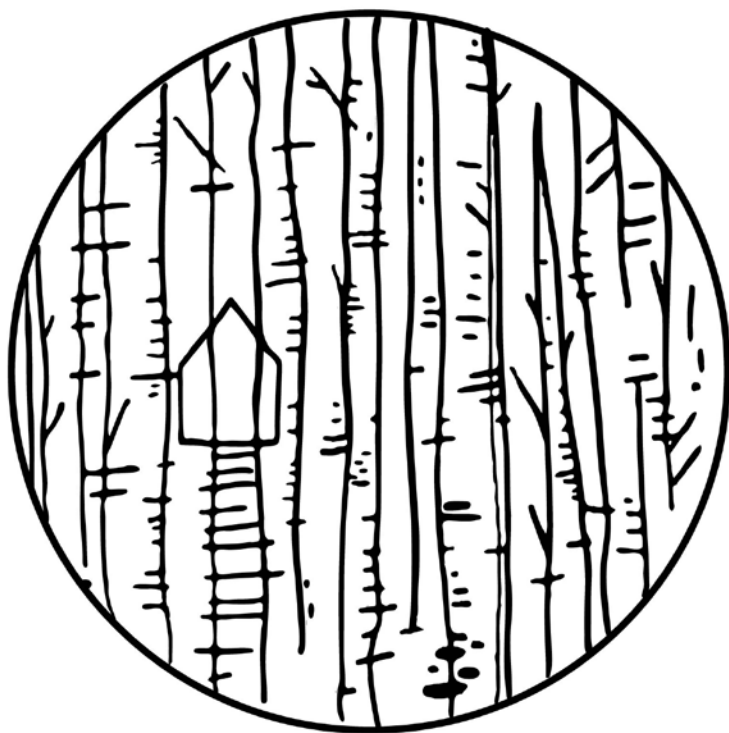
1



CONNATURAL

Lap

3



CONNATURAL SAS

L-a-p